

Lifting the Dark Clouds: What can Europe do to Reduce the Burden of Depression in the Workplace?

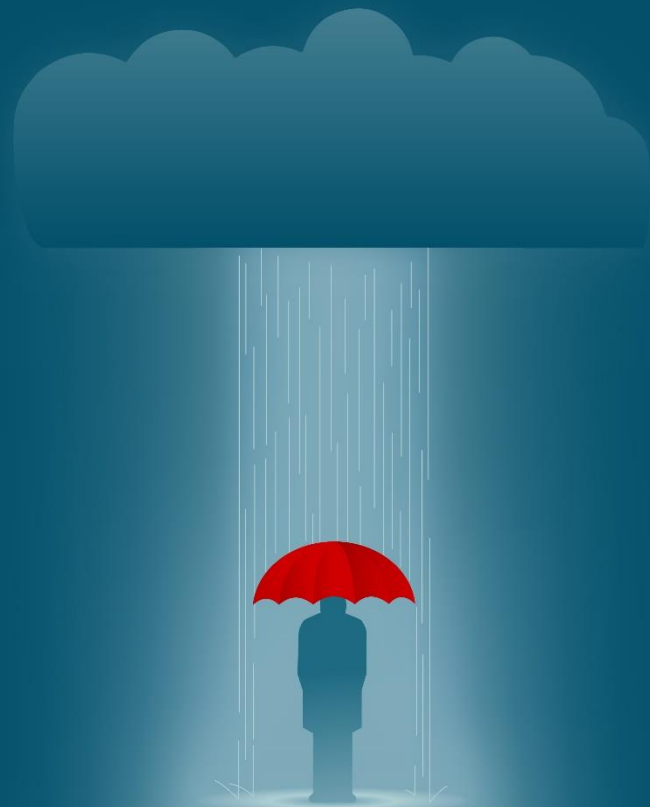
Wednesday, 9 December 2015

Registration from 13:00

Conference 14:00- 18:00

(followed by networking cocktail)

Thon EU Hotel, Rue de la Loi 75,
1040, Brussels



Background and objectives

Depression has a substantial impact on the workforce in terms of presenteeism, sick leave and early retirement. **One in 5 Europeans** of working age has been diagnosed with depression at some point in their life, and one in 10 has taken time off from work because of depression.¹ Ranked among the top 10 leading causes of disability,² depression is estimated to cost European economies €92 billion each year.³

The **'Lifting the Dark Clouds' conference** will conclude the successful *Year of the Brain 2015* and will feature **key European experts from the health and employment fields.**

The objectives are to:

- **Generate awareness** of the increasing burden and impact of brain diseases – especially the impact of depression in the workplace within Europe
- Showcase **best workplace practices** to support employees with depression
- **Provide a forum** to discuss how EU policy makers, patient organisations, health stakeholders and employers can work closer together to ensure parity between mental and physical health.

¹ Evans-Lacko S, et al. PLoS One 2014;9:e91053

² GBD 2013 DALYs and HALE Collaborators. Lancet 2015 Aug 27. pii: S0140-6736(15)61340-X

³ Oleson J, et al. Eur J Neurol 2012;19:155-62

Final Agenda

13:00 Welcome desk and registration		
Introduction and opening		
14:00 - 14:05	Welcome address and objectives of the conference	Dr Mary Baker President Year of the Brain 2015 European Brain Council
14:05 - 14:15	Conference opening	Mr Robert Madelin European Political Strategy Centre, European Commission
Setting the scene: the societal impact of depression in Europe <i>Session Chair: Prof. David Nutt, President of EBC</i>		
14:15 -14:25	Depression: definition and key facts on the burden of disease	Prof. Gabriel Ivbijaro World Federation for Mental Health
14:25 -14:35	Comorbidity of depression and physical illness: a major challenge	Prof. Norman Sartorius Former Director of WHO Division of Mental Health
14:35 - 14:45	Burden and impact of depression in the workplace	Ms Amelia Mustapha Executive Director - European Depression Association (EDA)
14:45 - 14:55	Managing depression: a testimony	Mr David Kinder HM Treasury -Deputy Director, Workforce, Pay and Pensions
14:55-15:15	Q&A with the audience	
Recognising depression in the workplace as key health priority: what can the EU do? <i>Moderator: John Bowis, Former MEP, Honorary President Health First Europe</i>		
15:20 -15:30	Introductory statement	Dr Mary Baker President Year of the Brain 2015 European Brain Council
15:30-16-25	<i>Panel Discussion:</i> Mr Juergen Scheftlein European Commission, DG Santé, Policy officer mental health and well-being Professor José Miguel Caldas de Almeida Coordinator, EU Joint Action on Mental Health and Wellbeing Professor Stephen Bevan Director Center for Workforce Effectiveness, The Work Foundation, UK Mr Paul Arteel Executive Director - Gamian Europe	
16:25 - 16:45 Coffee break		
Best practises and unmet needs: how can we best work together to target the impact of depression in the workplace in Europe? <i>Moderator: Bill Wilkerson, Chair, Target the Impact of Depression in the Workplace Initiative in Europe</i>		
16:50 - 17:00	Introductory statement	Dr. Petr Winkler European Psychiatry Association (EPA)
17:00 -17:55	<i>Panel Discussion:</i> Dr Jorge Costa-David European Commission - DG Employment, Health, Safety and Hygiene at work Mr Kris De Meester Chair, Health and Safety Working Group, BusinessEurope Dr Vedat Mizrahi Medical & Occupational Health Director– Europe, Unilever Mr David Kinder HM Treasury -Deputy Director, Workforce, Pay and Pensions	
Conference closure		
17:55 -18:00	Dr Mary Baker President Year of the Brain 2015 European Brain Council	
18:00 Cocktail Reception		

Conference sponsors

The conference is organised with the support of the following industry partners: H. Lundbeck A/S, Medtronic, Takeda and Roche.